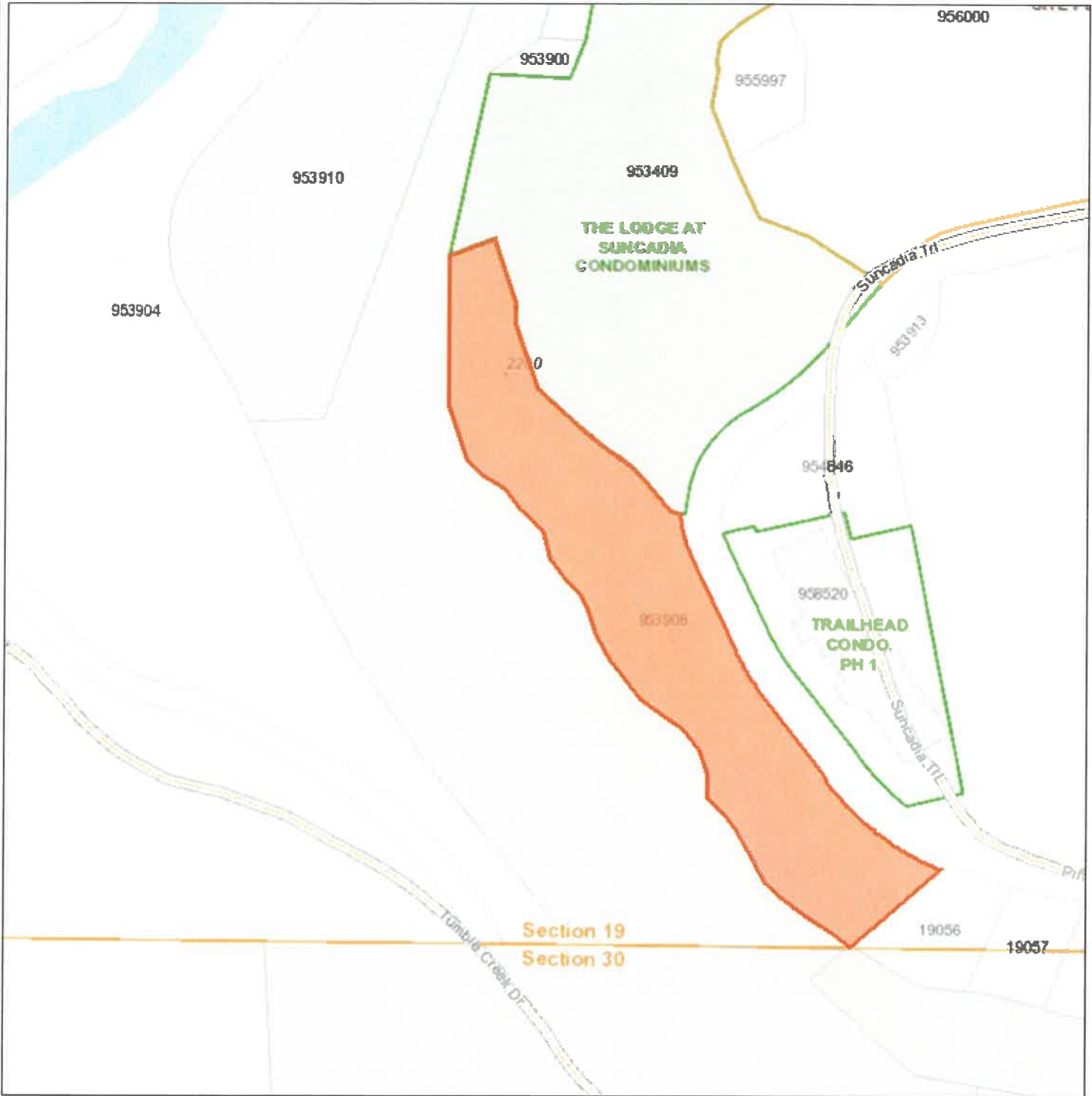


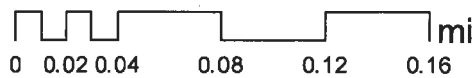
TRACT Z2



Date: 3/16/2018

1 inch = 376 feet
Relative Scale 1:4,514

Disclaimer:
Kittitas County makes every effort to produce and publish the most current and accurate information possible. No warranties, expressed or implied, are provided for the data, its use, or its interpretation. Kittitas County does not guarantee the accuracy of the material contained herein and is not responsible for any use, misuse or representations by others regarding this information or its derivatives.



**CLOSURE ON
SOUTH COTTAGES
SUNCADIA PHASE 1 DIVISION 15
August 28, 2018**

BOUNDARY

Northing	Easting	Bearing	Length	Arc Length	Radius	Delta	Radial Bearing In	Bearing	Radial Bearing Out
684280.8657	1511086.0327	N 70°22'30" E	86.32						
684309.8574	1511167.3384	S 21°00'00" E	125.93						
684192.2916	1511212.4677	S 03°55'41" E	43.22						
684149.1731	1511215.4284	S 21°10'21" E	130.62						
684027.3703	1511262.6054	S 47°43'16" E	110.72						
683952.8846	1511344.5248			106.62	877.00	6°57'57"	N 42°16'44" E		N 35°18'47" E
683886.1213	1511427.5735			48.94	175.00	16°01'25"	S 35°18'47" W		S 51°20'12" W
683852.6503	1511463.0612	S 38°39'48" E	91.68						
683781.0638	1511520.3376	S 75°34'10" E	77.51						
683761.7478	1511595.4022			129.90	250.00	29°46'16"	S 86°05'33" E		N 64°08'11" E
683635.6537	1511619.8623	S 25°51'49" E	212.02						
683444.8707	1511712.3519			97.25	550.00	10°07'53"	N 64°08'11" E		N 54°00'18" E
683361.5543	1511762.2736	S 35°59'42" E	204.77						
683195.8814	1511882.6199			278.39	550.00	29°00'03"	N 54°00'18" E		N 25°00'15" E
683020.6721	1512095.1312	S 64°59'45" E	10.63						
683016.1790	1512104.7649	S 48°22'45" W	213.94						
682874.0804	1511944.8326	N 50°03'23" W	56.62						
682910.4324	1511901.4234	N 48°44'53" W	64.60						
682953.0278	1511852.8560	N 54°09'09" W	60.58						
682988.5052	1511803.7511	N 49°58'27" W	55.03						
683023.8968	1511761.6117	N 46°01'03" W	44.68						
683054.9243	1511729.4621	N 26°08'41" W	50.91						
683100.6254	1511707.0291	N 29°33'16" W	61.65						
683154.2540	1511676.6202	N 33°06'28" W	41.58						
683189.0832	1511653.9086	N 44°29'29" W	46.67						
683222.3720	1511621.2056	N 03°16'33" W	44.72						
683267.0149	1511618.6504	N 20°35'42" W	49.91						
683313.7352	1511601.0941	N 37°21'38" W	53.85						
683356.5337	1511568.4188	N 54°21'18" W	49.94						
683385.6369	1511527.8354	N 52°13'10" W	52.64						
683417.8862	1511486.2307	N 37°08'57" W	50.39						

Northing	Easting	Bearing	Length	Arc Length	Radius	Delta	Radial Bearing In	Bearing	Radial Bearing Out
683458.0503	1511455.8005	N 38°19'10" W	49.10						
683496.5725	1511425.3563	N 30°12'55" W	60.16						
683548.5592	1511395.0808	N 18°04'00" W	52.36						
683598.3339	1511378.8440	N 29°17'02" W	39.18						
683632.5069	1511359.6796	N 45°20'09" W	42.90						
683662.6635	1511329.1674	N 37°25'11" W	46.90						
683699.9078	1511300.6717	N 16°06'14" W	58.89						
683756.4831	1511284.3379	N 45°18'10" W	61.19						
683799.5217	1511240.8420	N 35°20'28" W	52.08						
683842.0045	1511210.7167	N 57°05'30" W	48.87						
683868.5554	1511169.6883	N 46°35'43" W	46.29						
683900.3635	1511136.0578	N 20°13'19" W	112.07						
684005.5256	1511097.3199	N 02°20'58" W	275.58						
684280.8699	1511086.0230	S 66°27'44" E	0.01						
684280.8657	1511086.0327								

Perimeter 3697.79 Area 3,122,87 S.F. 7.169 Acres

LOT 1

Northing	Easting	Bearing	Length	Arc Length	Radius	Delta	Radial Bearing In	Bearing	Radial Bearing Out
682933.3469	1511875.2958	N 47°17'53" E	184.90						
683058.7433	1512011.1772	S 44°25'27" E	12.58						
683049.7589	1512019.9828			37.40	33.00	64°56'31"	N 45°34'33" E		N 19°21'58" W
683041.7249	1512054.4935			45.78	550.00	4°46'09"	N 29°46'24" E		N 25°00'15" E
683020.6707	1512095.1308	S 64°59'45" E	10.63						
683016.1776	1512104.7645	S 48°22'45" W	213.94						
682874.0790	1511944.8322	N 50°03'23" W	56.62						
682910.4310	1511901.4230	N 48°44'53" W	34.76						
682933.3507	1511875.2898	S 57°34'04" E	0.01						
682933.3469	1511875.2958								

Perimeter 596.62 Area 18,319 S.F. 0.42 Acres

LOT 2

Northing	Easting	Bearing	Length	Arc Length	Radius	Delta	Radial In	Bearing	Radial Out	Bearing
682988.4993	1511803.7600	N 47°02'21" E	189.84							
683117.8749	1511942.6887	S 46°18'58" E	60.12							
683076.3513	1511986.1652	S 59°02'37" E	21.97							
683065.0502	1512005.0057	S 44°25'27" E	8.82							
683058.7512	1512011.1794	S 47°17'53" W	184.90							
682933.3548	1511875.2980	N 48°44'53" W	29.84							
682953.0305	1511852.8637	N 54°09'09" W	60.58							
682988.5079	1511803.7589	S 07°34'52" E	0.01							
682988.4993	1511803.7600									

Perimeter 556.08 Area 16,572 S.F. 0.38 Acres

LOT 3

Northing	Easting	Bearing	Length	Arc Length	Radius	Delta	Radial In	Bearing	Radial Out	Bearing
683054.9198	1511729.4668	S 46°01'03" E	44.68							
683023.8923	1511761.6163	S 49°58'27" E	55.03							
682988.5007	1511803.7558	N 47°02'21" E	189.84							
683117.8763	1511942.6845	N 40°05'54" W	90.34							
683186.9810	1511884.4963	S 49°34'23" W	203.65							
683054.9185	1511729.4712	N 73°05'59" W	0.00							
683054.9198	1511729.4668									

Perimeter 583.54 Area 18,703 S.F. 0.43 Acres

LOT 4

Northing	Easting	Bearing	Length	Arc Length	Radius	Delta	Radial In	Bearing	Radial Out	Bearing
683147.7064	1511680.3365	S 29°33'16" E	54.13							
683100.6194	1511707.0361	S 26°08'41" E	50.91							
683054.9183	1511729.4691	N 49°34'23" E	203.65							
683186.9808	1511884.4943	N 39°06'24" W	91.47							
683257.9591	1511826.7981	S 53°01'38" W	183.32							
683147.7039	1511680.3398	N 53°54'16" W	0.00							
683147.7064	1511680.3365									

Perimeter 583.48 Area 18,733 S.F. 0.43 Acres

LOT 5

Northing	Easting	Bearing	Length	Arc Length	Radius	Delta	Radial Bearing In	Bearing	Radial Bearing Out
683218.6175	1511624.8965	N 53°01'38" E	184.34						
683329.4861	1511772.1696	S 36°13'56" E	54.33						
683285.6620	1511804.2819	S 39°06'24" E	35.70						
683257.9598	1511826.8002	S 53°01'38" W	183.32						
683147.7046	1511680.3420	N 29°33'16" W	7.52						
683154.2462	1511676.6327	N 33°06'28" W	41.58						
683189.0754	1511653.9211	N 44°29'29" W	41.42						
683218.6226	1511624.8939	S 26°53'32" E	0.01						
683218.6175	1511624.8965								

Perimeter 548.22 Area 16,276 S.F. 0.37 Acres

LOT 6

Northing	Easting	Bearing	Length	Arc Length	Radius	Delta	Radial Bearing In	Bearing	Radial Bearing Out
683330.0122	1511588.6736	N 56°21'13" E	154.77						
683415.7650	1511717.5154			18.21	63.00	16°33'40"	N 54°35'35" E		N 38°01'55" E
683402.6429	1511730.0497			46.44	65.00	40°55'54"	S 38°01'55" W		S 78°57'49" W
683363.8876	1511753.8011			25.51	58.00	25°11'45"	N 78°57'49" E		N 53°46'04" E
683340.7092	1511763.9440	S 36°13'56" E	13.91						
683329.4890	1511772.1656	S 53°01'38" W	184.34						
683218.6204	1511624.8924	N 44°29'29" W	5.25						
683222.3655	1511621.2132	N 03°16'33" W	44.72						
683267.0124	1511618.6578	N 20°35'42" W	49.91						
683313.7327	1511601.1015	N 37°21'38" W	20.49						
683330.0188	1511588.6675	S 42°32'58" E	0.01						
683330.0122	1511588.6736								

Perimeter 563.55 Area 17,802 S.F. 0.41 Acres

LOT 7

Northing	Easting	Bearing	Length	Arc Length	Radius	Delta	Radial Bearing In	Radial Bearing Out
683398.5554	1511511.1746	N 56°21'13" E	190.97					
683504.3654	1511670.1519			31.29	59.00	30°22'53"	N 69°05'45" E	N 38°42'52" E
683479.3808	1511688.3675			38.49	48.00	45°56'30"	S 38°42'52" W	S 84°39'22" W
683446.3981	1511706.1378			33.06	63.00	30°03'47"	N 84°39'22" E	N 54°35'35" E
683415.7646	1511717.5154	S 56°21'13" W	154.77					
683330.0118	1511588.6735	N 37°21'38" W	33.36					
683356.5275	1511568.4297	N 54°21'18" W	49.94					
683385.6306	1511527.8463	N 52°13'10" W	21.09					
683398.5511	1511511.1776	N 34°42'28" W	0.01					
683398.5554	1511511.1746							

Perimeter 552.97 Area 17,279 S.F. 0.40 Acres

LOT 8

Northing	Easting	Bearing	Length	Arc Length	Radius	Delta	Radial Bearing In	Radial Bearing Out
683465.7610	1511449.7141	N 56°21'13" E	212.24					
683583.3559	1511626.3981			25.88	53.00	27°58'41"	N 59°02'36" E	N 31°03'55" E
683565.2198	1511644.4999			46.83	45.00	59°37'34"	S 31°03'55" W	N 89°18'31" W
683526.1307	1511666.2760			22.24	59.00	21°35'44"	S 89°18'31" E	N 69°05'45" E
683504.3673	1511670.1551	S 56°21'13" W	190.97					
683398.5573	1511511.1778	N 52°13'10" W	31.55					
683417.8861	1511486.2418	N 37°08'57" W	50.39					
683458.0502	1511455.8117	N 38°19'10" W	9.84					
683465.7704	1511449.7105	S 21°15'19" E	0.01					
683465.7610	1511449.7141							

Perimeter 589.95 Area 19,000 S.F. 0.44 Acres

LOT 9

Northing	Easting	Bearing	Length	Arc Length	Radius	Delta	Radial Bearing In	Bearing	Radial Bearing Out
683543.4867	1511398.0435	N 56°08'42" E	167.08						
683636.5658	1511536.7951	N 78°16'59" E	75.75						
683651.9489	1511610.9667	S 09°45'17" E	51.05						
683601.6369	1511619.6162			19.61	53.00	21°12'07"	N 80°14'43" E		N 59°02'36" E
683583.3541	1511626.3994	S 56°21'13" W	212.24						
683465.7592	1511449.7153	N 38°19'10" W	39.27						
683496.5691	1511425.3662	N 30°12'55" W	54.30						
683543.4920	1511398.0397	S 36°21'28" E	0.01						
683543.4867	1511398.0435								

Perimeter 619.31 Area 20,476 S.F. 0.47 Acres

LOT 10

Northing	Easting	Bearing	Length	Arc Length	Radius	Delta	Radial Bearing In	Bearing	Radial Bearing Out
683627.8746	1511362.2864	N 56°08'42" E	157.74						
683715.7504	1511493.2816	S 75°34'11" E	111.59						
683687.9420	1511601.3511			28.98	250.00	6°38'27"	N 76°52'24" E		N 70°13'57" E
683660.1671	1511609.5505	S 09°45'17" E	8.34						
683651.9477	1511610.9636	S 78°16'59" W	75.75						
683636.5646	1511536.7920	S 56°08'42" W	167.08						
683543.4855	1511398.0404	N 30°12'55" W	5.86						
683548.5494	1511395.0913	N 18°04'00" W	52.36						
683598.3278	1511378.8533	N 29°17'02" W	33.88						
683627.8782	1511362.2813	S 54°28'12" E	0.01						
683627.8746	1511362.2864								

Perimeter 641.59 Area 19,567 S.F. 0.45 Acres

TRACT Z-1

Northing	Easting	Bearing	Length	Arc Length	Radius	Delta	Radial Bearing In	Bearing	Radial Bearing Out
684280.8657	1511086.0327	N 70°22'30" E	86.32						
684309.8574	1511167.3384	S 21°00'00" E	125.93						
684192.2916	1511212.4677	S 03°55'41" E	43.22						
684149.1731	1511215.4284	S 21°10'21" E	130.62						
684027.3703	1511262.6054	S 47°43'16" E	110.72						

Northing	Easting	Bearing	Length	Arc Length	Radius	Delta	Radial Bearing In	Radial Bearing Out
683952.8846	1511344.5248			106.62	877.00	6°57'57"	N 42°16'44" E	N 35°18'47" E
683886.1213	1511427.5735			48.94	175.00	16°01'25"	S 35°18'47" W	S 51°20'12" W
683852.6503	1511463.0612	S 38°39'48" E	91.68					
683781.0638	1511520.3376	S 75°34'10" E	77.51					
683761.7478	1511595.4022			55.01	98.00	32°09'38"	S 76°14'45" E	N 71°35'37" E
683707.5037	1511597.6056			19.93	250.00	4°34'02"	N 81°26'26" E	N 76°52'24" E
683687.9364	1511601.3535	N 75°34'11" W	111.59					
683715.7448	1511493.2840	S 56°08'42" W	157.74					
683627.8689	1511362.2888	N 29°17'02" W	5.30					
683632.4916	1511359.6964	N 45°20'09" W	42.90					
683662.6482	1511329.1842	N 37°25'11" W	46.90					
683699.8964	1511300.6855	N 16°06'14" W	58.89					
683756.4756	1511284.3506	N 45°18'10" W	61.19					
683799.5142	1511240.8547	N 35°20'28" W	52.08					
683841.9971	1511210.7294	N 57°05'30" W	48.87					
683868.5480	1511169.7010	N 46°35'43" W	46.29					
683900.3560	1511136.0705	N 20°13'19" W	112.07					
684005.5181	1511097.3326	N 02°20'58" W	275.58					
684280.8664	1511086.0355	S 75°34'41" W	0.00					
684280.8657	1511086.0327							

Perimeter 1915.90 Area 123,852 S.F. 2.84 Acres

ROW DEDICATION S

Northing	Easting	Bearing	Length	Arc Length	Radius	Delta	Radial Bearing In	Radial Bearing Out
683660.1672	1511609.5500			26.60	250.00	6°05'46"	N 70°13'57" E	N 64°08'11" E
683635.6607	1511619.8594	S 25°51'49" E	212.02					
683444.8777	1511712.3490			97.25	550.00	10°07'53"	N 64°08'11" E	N 54°00'18" E
683361.5613	1511762.2707	S 35°59'42" E	204.77					
683195.8884	1511882.6170			232.61	550.00	24°13'54"	N 54°00'18" E	N 29°46'24" E
683041.7333	1512054.4911			37.40	33.00	64°56'31"	N 19°21'58" W	N 45°34'33" E
683049.7673	1512019.9803	N 44°25'27" W	12.58					
683058.7516	1512011.1748	N 44°25'27" W	8.82					
683065.0507	1512005.0011	N 59°02'37" W	21.97					
683076.3517	1511986.1605	N 46°18'58" W	60.12					
683117.8754	1511942.6840	N 40°05'54" W	90.34					
683186.9801	1511884.4959	N 39°06'24" W	91.47					
683257.9583	1511826.7997	N 39°06'24" W	35.70					

Northing	Easting	Bearing	Length	Arc Length	Radius	Delta	Radial Bearing In	Radial Bearing Out
683285.6605	1511804.2814	N 36°13'56" W	68.24					
683340.7048	1511763.9475			25.51	58.00	25°11'45"	N 53°46'04" E	N 78°57'49" E
683363.8832	1511753.8046			46.44	65.00	40°55'54"	S 78°57'49" W	S 38°01'55" W
683402.6385	1511730.0533			18.21	63.00	16°33'40"	N 38°01'55" E	N 54°35'35" E
683415.7606	1511717.5190			33.06	63.00	30°03'47"	N 54°35'35" E	N 84°39'22" E
683446.3941	1511706.1414			38.49	48.00	45°56'30"	S 84°39'22" W	S 38°42'52" W
683479.3768	1511688.3711			31.29	59.00	30°22'53"	N 38°42'52" E	N 69°05'45" E
683504.3614	1511670.1555			22.24	59.00	21°35'44"	N 69°05'45" E	S 89°18'31" E
683526.1249	1511666.2764			46.83	45.00	59°37'34"	N 89°18'31" W	S 31°03'55" W
683565.2140	1511644.5003			25.88	53.00	27°58'41"	N 31°03'55" E	N 59°02'36" E
683583.3500	1511626.3985			19.61	53.00	21°12'07"	N 59°02'36" E	N 80°14'43" E
683601.6329	1511619.6153	N 09°45'17" W	59.39					
683660.1642	1511609.5528	N 42°53'00" W	0.00					
683660.1672	1511609.5500							

Perimeter 1566.83 Area 5,613 S.F. 0.13 Acres

ROW DEDICATION N

Northing	Easting	Bearing	Length	Arc Length	Radius	Delta	Radial Bearing In	Radial Bearing Out
683761.7531	1511595.3991			55.01	98.00	32°09'38"	S 76°14'45" E	N 71°35'37" E
683707.5090	1511597.6025			54.40	250.00	12°28'01"	N 81°26'26" E	S 86°05'33" E
683761.7544	1511595.3991	S 03°52'14" W	0.00					
683761.7531	1511595.3991							

Perimeter 109.41 Area 86 S.F. 0.00 Acres

EASEMENT

Northing	Easting	Bearing	Length	Arc Length	Radius	Delta	Radial Bearing In	Radial Bearing Out
683764.2874	1511585.5555			92.60	260.00	20°24'25"	S 85°41'01" E	N 73°54'34" E
683672.6581	1511595.0036	S 72°48'27" W	3.00					
683671.7714	1511592.1376			15.67	263.00	3°24'47"	N 73°53'48" E	N 70°29'01" E
683656.8577	1511596.9287	S 09°45'17" E	58.26					
683599.4400	1511606.7997			21.79	66.00	18°54'49"	N 80°14'43" E	N 61°19'54" E
683578.9597	1511613.9364	S 28°40'06" E	100.38					
683490.8851	1511662.0925			13.31	72.00	10°35'17"	N 61°19'54" E	N 50°44'37" E
683479.8653	1511669.5150	N 54°43'32" E	1.66					
683480.8240	1511670.8702	S 28°05'56" E	73.64					

Northing	Easting	Bearing	Length	Arc Length	Radius	Delta	Radial Bearing In	Radial Bearing Out
683415.8635	1511705.5542	S 31°42'30" E	69.62					
683356.6353	1511742.1462			26.32	71.00	21°14'21"	N 75°00'25" E	N 53°46'04" E
683333.0379	1511753.4586	S 36°13'56" E	33.83					
683305.7497	1511773.4541	N 53°46'04" E	3.00					
683307.5229	1511775.8740	S 36°13'56" E	34.66					
683279.5652	1511796.3601	S 39°06'24" E	97.10					
683204.2182	1511857.6075	S 50°53'36" W	3.00					
683202.3259	1511855.2796	S 39°06'24" E	30.43					
683178.7130	1511874.4738	S 40°05'54" E	91.16					
683108.9811	1511933.1901	S 46°18'58" E	19.22					
683095.7062	1511947.0892	S 49°28'26" E	61.89					
683055.4904	1511994.1324	S 52°42'38" E	45.84					
683027.7187	1512030.6020	N 22°06'18" E	4.01					
683031.4339	1512032.1110			21.32	43.00	28°24'34"	N 15°25'39" E	N 12°58'55" W
683030.9836	1512053.2095			42.38	560.00	4°20'09"	N 29°20'24" E	N 25°00'15" E
683011.6358	1512090.9014	S 64°59'45" E	6.31					
683008.9686	1512096.6201	N 48°22'45" E	10.89					
683016.2017	1512104.7609	N 64°59'45" W	10.63					
683020.6949	1512095.1272			45.78	550.00	4°46'09"	N 25°00'15" E	N 29°46'24" E
683041.7491	1512054.4900			37.40	33.00	64°56'31"	N 19°21'58" W	N 45°34'33" E
683049.7831	1512019.9792	N 44°25'27" W	12.58					
683058.7674	1512011.1737	N 44°25'27" W	8.82					
683065.0665	1512005.0000	N 59°02'37" W	21.97					
683076.3675	1511986.1594	N 46°18'58" W	60.12					
683117.8912	1511942.6830	N 40°05'54" W	90.34					
683186.9958	1511884.4948	N 39°06'24" W	91.47					
683257.9741	1511826.7987	N 39°06'24" W	35.70					
683285.6763	1511804.2803	N 36°13'56" W	68.24					
683340.7206	1511763.9464			25.51	58.00	25°11'45"	N 53°46'04" E	N 78°57'49" E
683363.8990	1511753.8035			46.44	65.00	40°55'54"	S 78°57'49" W	S 38°01'55" W
683402.6543	1511730.0522			18.21	63.00	16°33'40"	N 38°01'55" E	N 54°35'35" E
683415.7764	1511717.5179			33.06	63.00	30°03'47"	N 54°35'35" E	N 84°39'22" E
683446.4099	1511706.1403			38.49	48.00	45°56'30"	S 84°39'22" W	S 38°42'52" W
683479.3926	1511688.3701			31.29	59.00	30°22'53"	N 38°42'52" E	N 69°05'45" E
683504.3772	1511670.1544			22.24	59.00	21°35'44"	N 69°05'45" E	S 89°18'31" E
683526.1406	1511666.2753			46.83	45.00	59°37'34"	N 89°18'31" W	S 31°03'55" W
683565.2297	1511644.4992			25.88	53.00	27°58'41"	N 31°03'55" E	N 59°02'36" E
683583.3658	1511626.3975			19.61	53.00	21°12'07"	N 59°02'36" E	N 80°14'43" E
683601.6487	1511619.6142	N 09°45'17" W	59.39					

Northing	Easting	Bearing	Length	Arc Length	Radius	Delta	Radial Bearing In	Radial Bearing Out
683660.1800	1511609.5517			28.98	250.00	6°38'27"	N 70°13'57" E	N 76°52'24" E
683687.9549	1511601.3523			19.93	250.00	4°34'02"	N 76°52'24" E	N 81°26'26" E
683707.5222	1511597.6044			55.01	98.00	32°09'38"	N 71°35'37" E	S 76°14'45" E
683761.7663	1511595.4010	N 75°34'10" W	10.16					
683764.2982	1511585.5615	S 29°07'45" W	0.01					
683764.2874	1511585.5555							

Perimeter 1945.35 Area 12,176 S.F. 0.28 Acres

\\esm8\enr\esm-jobs\998\766\017\document\calc-001.doc